

INTERNATIONAL MONETARY FUND

Beyond Energy: Inflationary Effects of Metals Price Shocks in Production Networks

Jorge Miranda-Pinto, Andrea Pescatori, Martin Stuermer, and
Xueliang Wang

WP/24/215

IMF Working Papers describe research in progress by the author(s) and are published to elicit comments and to encourage debate.

The views expressed in IMF Working Papers are those of the author(s) and do not necessarily represent the views of the IMF, its Executive Board, or IMF management.

**2024
OCT**



WORKING PAPER

IMF Working Paper
Research Department

Beyond Energy: Inflationary Effects of Metals Price Shocks in Production Networks
Prepared by Jorge Miranda-Pinto, Andrea Pescatori, Martin Stuermer, and Xueliang Wang

Authorized for distribution by Petya Koeva Brooks
October 2024

IMF Working Papers describe research in progress by the author(s) and are published to elicit comments and to encourage debate. The views expressed in IMF Working Papers are those of the author(s) and do not necessarily represent the views of the IMF, its Executive Board, or IMF management.

ABSTRACT: We examine the role of metals as economic inputs by using a production network model, calibrated for various countries using input-output (I-O) tables. Empirically, we employ local projections to study how metal shocks influence inflation, testing country-level heterogeneity in the sensitivity to these shocks. Our findings indicate that metals price shocks have significant and persistent effects on core and headline inflation, with particularly pronounced effects on countries that are highly exposed to metals in their production networks. This is in contrast to oil supply shocks, which predominantly affect headline inflation. A shift of the global economy towards a higher relative metals intensity due to the energy transition could lead to commodity price shocks increasingly influencing core rather than headline inflation. This could make commodity price shocks less visible on impact but more persistent. Central banks should consider this shift when assessing inflation dynamics and risks.

JEL Classification Numbers:	E31, F41, L61, Q02
Keywords:	International macroeconomics; inflation; metals; production networks; supply shocks.
Author's E-Mail Address:	jmirandapinto@imf.org , APescatori@imf.org , MStuermer@imf.org , xuelianw@uci.edu

*We are grateful to Pierre-Olivier Gourinchas, Petya Koeva Brooks, and Alvaro Silva for comments and suggestions. Wenchuan Dong, Maximiliano Jerez Osses, Joseph Moussa and Tianchu Qi provided excellent research assistance. The views in this paper are those of the authors and do not reflect the views of the International Monetary Fund, its Executive Board, or its Management. †All authors are with the International Monetary Fund, except for Xueliang who is with the University of California, Irvine. E-mails: jmirandapinto@imf.org, apescatori@imf.org, mstuermer@imf.org, and xuelianw@uci.edu.

Beyond Energy: Inflationary Effects of Metals Price Shocks in Production Networks*

Jorge Miranda-Pinto, Andrea Pescatori, Martin Stuermer,
and Xueliang Wang[†]

October 1, 2024

Abstract

We examine the role of metals as economic inputs by using a production network model, calibrated for various countries using input-output (I-O) tables. Empirically, we employ local projections to study how metal shocks influence inflation, testing country-level heterogeneity in the sensitivity to these shocks. Our findings indicate that metals price shocks have significant and persistent effects on core and headline inflation, with particularly pronounced effects on countries that are highly exposed to metals in their production networks. This contrasts to oil supply shocks, which predominantly affect headline inflation. A shift of the global economy towards a higher relative metals intensity due to the energy transition could lead to commodity price shocks increasingly influencing core rather than headline inflation. This could make commodity price shocks less visible on impact but more persistent. Central banks should consider this shift when assessing inflation dynamics and risks.

JEL classification: E31, F41, L61, Q02.

Keywords: International macroeconomics, inflation, metals, production networks, supply shocks.

*We are grateful to Pierre-Olivier Gourinchas, Petya Koeva Brooks, and Alvaro Silva for comments and suggestions. Wenchuan Dong, Maximiliano Jerez Osses, Joseph Moussa and Tianchu Qi provided excellent research assistance. The views in this paper are those of the authors and do not reflect the views of the International Monetary Fund, its Executive Board, or its Management.

[†]All authors are with the International Monetary Fund, except for Xueliang who is with the University of California, Irvine. E-mails: jmirandapinto@imf.org, apescatori@imf.org, mstuermer@imf.org, and xuelianw@uci.edu

1 Introduction

Oil price shocks have been considered a major source of business cycle fluctuations, especially for headline inflation globally (see e.g., [Hamilton, 1983](#); [Blanchard and Gali, 2007](#); [Nakov and Pescatori, 2010](#); [Gagliardone and Gertler, 2023](#); [Bernanke and Blanchard, 2023](#)). However, the shift from fossil fuels to metals as inputs to energy systems may render the global economy less oil intensive and more metals intensive (see, e.g., [IEA, 2022](#); [Boer, Pescatori, and Stuermer, 2024](#)). For example, the IEA predicts that demand for copper will grow by a factor of 1.5, while the consumption of oil could decline by 25 percent by 2030 in a net zero emissions scenario.

At the same time, metals prices could become more volatile due to geopolitical tensions. New restrictive trade policies, including on metals trade, have almost doubled since the onset of the war in Ukraine (see, e.g., [Gopinath et al., 2024](#); [Alvarez et al., 2023](#)). Because most metals production is geographically concentrated and not easy to substitute, disrupting trade would lead to sharp swings in their prices with a growing impact on the economy due to the energy transition (see [Alvarez et al., 2023](#)).

Unfortunately, the role of metals in the economy as a propagation channel for supply shocks is not well understood. This is surprising as metals are at the heart of recent tariff increases (e.g., the US announced tariff increases on Chinese aluminum and steel by 25 percent in May 2024), and metals are cited as a reason for stubborn inflation by media (see, e.g., [Simon, 2024](#)).

This paper examines the role of metals in the economy and how metals supply shocks propagate through production networks and impact inflation. To this end, we adopt the small open economy model by [Silva \(2023\)](#), featuring production networks. We test the predictions of the theoretical framework by applying local projections to a balanced panel of 39 economies. We also compare these results to those for oil.

We establish that metals are key inputs for production, particularly for the production of investment goods (e.g., machinery, electrical equipment, motor vehicles, construction).

We show that copper supply shocks have significant and persistent effects on both headline and core inflation. On average, a one percent increase in copper prices driven by an exogenous copper supply shock leads to a roughly 0.02 percentage point increase in both headline and core inflation after 12 months. The impact increases to 0.05 and 0.03 percentage points after 24 months, respectively, and is quite persistent. Since copper represents about 30 percent of the global trade in industrial metals, these estimates are a lower bound for the impact of a generalized increase in metals prices. In comparison, oil supply shocks impact mostly headline inflation. A one percent increase in oil prices has a 0.05 percentage points impact on headline inflation after 12 and also 24 months but becomes insignificant after 40 months. There is no significant impact on core inflation.

The network model, calibrated for a wide set of countries, allows us to calculate the country-level *exposure* to metals (oil), for final consumption. Exploiting this information we test how this heterogeneity affects our results. For countries with high exposure, the impact of a one percent increase in copper price due to a supply shock raises headline inflation by 0.03 percentage points after 12 months and 0.1 percentage points after 24 months. The impact on core inflation is 0.03 percentage points after 12 months and 0.05 percentage points after 24 months. For countries with low exposure, there is a modest initial impact of about 0.01 percentage points, on both types of inflation, which becomes statistically insignificant after about 12 months. In comparison, oil supply shocks mostly impact headline inflation, immediately. Our results show that a one percent increase in oil prices has a large impact on headline inflation, reaching 0.05 percentage points after 12 months. There is no observed heterogeneity between countries with high and low production network exposure to oil.¹

Our results imply that if the world economy became more metals intense due to the energy transition, inflationary shocks could be more persistent. In contrast to oil sup-

¹A potential reason for the lack of heterogeneity in the propagation of oil supply shocks is the limited granularity of the input-output data. The energy sector used to describe the 'oil sector' also includes gas and coal, which can be significant in some countries.

ply shocks that are more temporary, central banks may need to react to changes in core inflation due to metals supply shocks.

The paper builds on the literature on production networks by emphasizing metals as inputs in the production of intermediate and investment goods. [Vom Lehn and Winberry \(2022\)](#) examine the role of the machinery and construction sectors in amplifying and propagating shocks in the US, while [Silva et al. \(2024\)](#) investigates the role of the agriculture and mining sectors in the propagation of commodity price shocks to small open economies. [Silva \(2023\)](#) studies the role of production networks in the transmission of imported input price shocks to inflation. Our contribution is to show that shocks to primary metal prices can significantly affect prices, and therefore inflation, through the key role that metals play as inputs in the production of investment goods, such as machinery, electrical equipment, and construction materials.

We also make contributions to the literature that examines the drivers of inflation comovement across countries (see, e.g., [Auer, Levchenko, and Sauré, 2019](#); [Bernanke and Blanchard, 2023](#), and others). The central role of primary metals in manufacturing could help explain the significant inflationary effects of changes in primary metals prices following US monetary policy shocks as documented in [Miranda-Pinto et al. \(2023\)](#). Our work shows that supply shocks to metals prices can have significant and persistent effects on core inflation, potentially leading to comovement across countries.

Finally, our work contributes to the extensive literature studying the transmission channels of commodity price shocks (see, e.g., [Kilian, 2009](#); [Baumeister and Hamilton, 2019](#); [Schmitt-Grohé and Uribe, 2018](#); [Di Pace, Juvenal, and Petrella, 2024](#); [Albrizio et al., 2023](#); [Benguria, Saffie, and Urzúa, 2024](#); [Silva et al., 2024](#)). We built on a small but growing literature that identifies shocks to metals prices (see, e.g., [Stuermer, 2018](#); [Jacks and Stuermer, 2020](#); [Vega-Olivares, 2022](#); [Boer, Pescatori, and Stuermer, 2024](#); [Baumeister, Ohn-sorge, and Verduzco-Bustos, 2024](#)). Our contribution is to show that metal supply shocks are important direct and indirect channels for inflation because metals are important in-

puts for intermediate and investment goods.

The remainder of the paper is structured as follows. Section 2 provides stylized facts about the role of metals in the economy. Section 3 lays out the theoretical framework. Section 4 presents the empirical results and Section 5 the robustness checks. Finally, Section 6 concludes.

2 Stylized Facts

We show that metals and oil enter the economy differently. While metals are mostly used for investment goods, oil is used as a flow in the production of energy, mostly in the transportation sector. We quantify the role of metals and oil in the economy, using input-output tables, which offer a snapshot of direct linkages between different sectors. Building on these tables, we employ a simple metric to gauge each sector’s exposure to metals (i.e., the Leontief’s inverse) capturing both the direct and indirect dependencies within the production network.

2.1 Measuring Direct and Indirect Linkages

To gauge the sectoral exposure to metals for both the US and other countries, we follow the literature on the propagation of sectoral shocks in the macroeconomy through production networks. Balke and Wynne (2000), for example, studies a closed economy model featuring input-output linkages and sectoral productivity shocks in the spirit of Long Jr and Plosser (1983). In this class of models, the total exposure of a given sector i to a productivity shock in sector j ($\frac{\partial \log P_i}{\partial \log Z_j}$), is given by the element ij of a version of the Leontief inverse matrix $(I - \Omega)^{-1}$, where the element $\{\Omega\}_{ij} = \frac{P_j M_{ij}}{P_i Q_i}$ represents the direct linkages between supplier j and customer i , as a fraction of sector i ’s gross output.²

²This result has been established by several papers in the literature. Among them, see Baqaee and Farhi (2019), Vom Lehn and Winberry (2022), and Silva (2023).

Therefore, when focusing on the metals sector (M), the element iM of the Leontief inverse characterizes both the direct and indirect effects of an increase in metals prices on sector i 's total intermediate input costs. This term accounts not only for the direct share of metals in sector i 's production but also for the share of metals in the production of i 's suppliers and the suppliers of i 's suppliers.³

2.2 Data: Input-Output Tables

The data used are from 3-digit US Bureau of Economic Analysis input-output tables for 2018. We define the metals sector as the sum of the mining sector, except oil and gas, and the primary metals sector. Due to lack of granularity in the input-output tables, we cannot identify crude oil precisely. Instead, we use the sum of the oil and gas extraction sector along with the petroleum and coal products sector. Annex B describes data-sources and definitions.

For other countries, we use input-output data from the OECD. The sectoral definitions for metals and oil are broadly consistent with those used in the US analysis. For metals, we consider the combined mining and quarrying of non-energy producing products sector and the basic metals sector. For oil, we sum up the mining and quarrying of energy-producing products sector as well as the coke and refined petroleum products manufacturing sector.

Given that a large fraction of metals and oil are imported, following Vom Lehn and Winberry (2022), we also account for imports of metals and oil by domestic sectors when calculating intermediate inputs.⁴

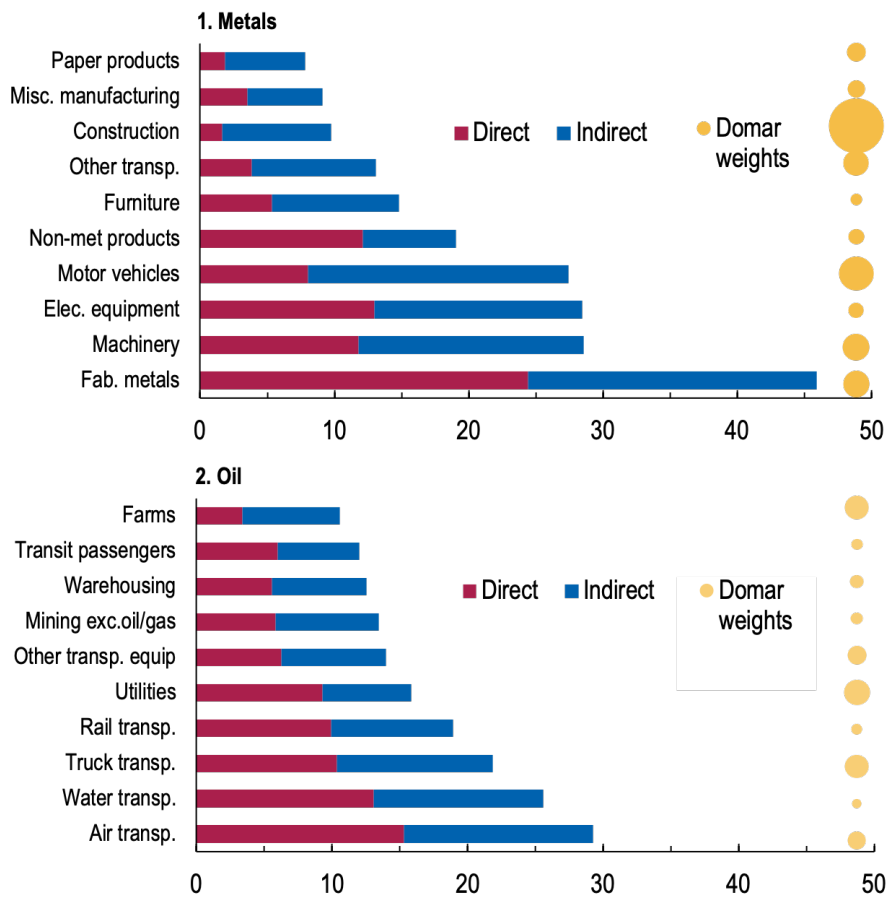
³The Leontief inverse $(I - \Omega)^{-1}$ captures all direct and indirect linkages. It can be expanded as an infinite sum of higher-order network effects: $I + \Omega + (\Omega)^2 + (\Omega)^3 + \dots$

⁴The methodology we use is derived from a closed economy framework. For the purposes of presenting stylized facts, we adapt this method to include imports, effectively "forcing" imports into the closed economy setup. The main analysis in later sections includes explicitly a tradable sector, where we focus directly on exposure to imported metals and oil.

2.3 Metals and Oil in the Production Network: the US Case

Figure 1 shows the sectoral exposure to metals (top panel) and oil (bottom panel) for the US. We further decompose the sectoral exposure into direct exposure (in red), which is the input-output share (Ω), and indirect exposure (in blue), which is total exposure (the Leontief inverse) minus the direct exposure. Additionally, we plot each sector's Domar weight (in yellow), the ratio between sectoral gross output and aggregate GDP, to give an intuition about the size of different sectors in the US economy.

Figure 1: The Top 10 US Sectors with the Largest Intermediate Input Expenditure Shares of Metals and Oil in Gross Output (Percent)



Note: The direct expenditure share is defined as the sectoral intermediate input expenditure of metals (oil) as a share of sectoral gross output. The indirect expenditure share is the Leontief inverse share element minus the direct expenditure share. The Domar weight is the ratio of the nominal value of each industry's gross output to GDP. Construction shows the highest Domar Weight (9.59 percent) and the water transportation sector the lowest (0.03 percent). We define the metals sector as the sum of the non-oil and non-gas mining sector and the primary metal sector. The oil sector is the sum of the mining of oil and gas sector and the petroleum and coal products manufacturing sector.

Looking first at direct exposure, we find that, unlike oil, primary metals are embedded in the production of investment goods. While metals like copper and aluminum represent only a small fraction of final consumption expenditure (e.g., 0.01 percent vs 2.6 percent for oil and coal products, in the US), they are critical direct intermediate inputs into the production of investment goods. For example, metals represent more than 10 percent of direct input expenditure in the US sectors for electrical equipment and machinery.

Because metals are embodied in investment goods, they are also indirect inputs across sectors. For example, to produce vehicles, metals are not only used for the body of the car but also for the machines used to assemble the car. Once the indirect component is taken into account, fabricated metals and machinery stand out with a 28 and 46 percent share, respectively. The most notable difference, however, is in the construction sector, where indirect exposure is 4 times as large as direct exposure. Construction also carries the highest Domar weight in the US economy, underscoring the importance of accounting for indirect linkages when assessing the role of metals.

In contrast, oil sector products are much less embodied in machines and investment goods. Instead, they are generally used as fuel to produce energy, mostly in transportation (air, water, truck, and rail) and utilities. Thus, while indirect exposure is still important, it plays a less prominent role compared to metals.

In summary, metals and oil enter the production network differently. What does this imply for the propagation of shocks? The fact that key upstream sectors providing capital are highly exposed to metals suggests that metals price shocks may lead to a more persistent impact on inflation, particularly on core inflation. Oil price shocks, on the other hand, are likely to have a more immediate effect, mainly on headline inflation. In the next section, we move to the cross-country sample.

2.4 Production and Consumption Exposures to Metals and Oil

An aggregate measure is needed to summarize the relevance of a sector in an economy's aggregate price index, including through the network. To derive one, it is possible to define a country's aggregate exposure to a sector (i.e., metals or oil) by using the expressions for CPI inflation and GDP deflator derived from the network model. Assuming that the household aggregate consumption bundle is $C = \prod_k \left(\frac{C_k}{b_k} \right)^{b_k}$, the cost minimization problem of the household implies the following consumer price index (CPI):

$$\log CPI_t = \sum_k b_k \cdot \log P_{kt},$$

in which b_k is the final consumption expenditure share of sector k and P_k is the price of sector k 's output. One could also define the simile of the GDP deflator as follows

$$\log DGDP_t = \sum_k va_k \cdot \log P_{kt},$$

with va_k representing the value-added share of sector k .

As emphasized above, the price of sector k depends on metals productivity through the Leontief inverse element kM . Hence, if the only shock in the economy is the shock to metals' productivity Z_M , the change in the GDP deflator and the CPI, in response to the metals exogenous shock, are defined as:

$$d \log DGDP_t = \sum_k va_k \cdot \frac{\partial \log P_{kt}}{\partial \log Z_M} = \sum_k va_k \cdot (I - \Omega_{total})_{kM}^{-1} \quad (1)$$

$$d \log CPI_t = \sum_k b_k \cdot \frac{\partial \log P_{kt}}{\partial \log Z_M} = \sum_k b_k \cdot (I - \Omega_{total})_{kM}^{-1} \quad (2)$$

where Ω_{total} is the I-O network including imported intermediates. These equations gauge the importance of metals for each sector component in the GDP deflator and the consumer price index (CPI). This approach captures the inflationary pressure stemming

from an exogenous shock to metals prices. The overall impact on inflation, however, will depend on the chosen monetary policy rule. In this case, nominal variables are pinned down by assuming that money supply targets a given level of nominal GDP.

Figure 2 plots the (total input-output network) exposure to metals and oil at the aggregate level, for the top 25 countries in the OECD sample. We also include the intermediate input imports of metals and oil by domestic sectors.

The top panel aggregates sectoral exposures to metals and oil using value-added shares, which are suited to gauge the exposure of the economy to metals and oil on the production side—i.e., the GDP deflator. The bottom panel shows the exposure to metals and oil on the consumption side. It uses final consumption expenditure shares, the relevant measure for CPI, to construct the consumption exposure, which indicates the percent increase in the CPI index of a country to a 10 percent negative supply shock that results in an about a 15 (16) percent increase in metals (oil) prices on average across countries. For instance, a 10 percent supply-driven increase in metals prices, would generate a 0.36 p.p. increase in China’s CPI, compared to a 0.1 p.p. increase for the US, according to the network model.

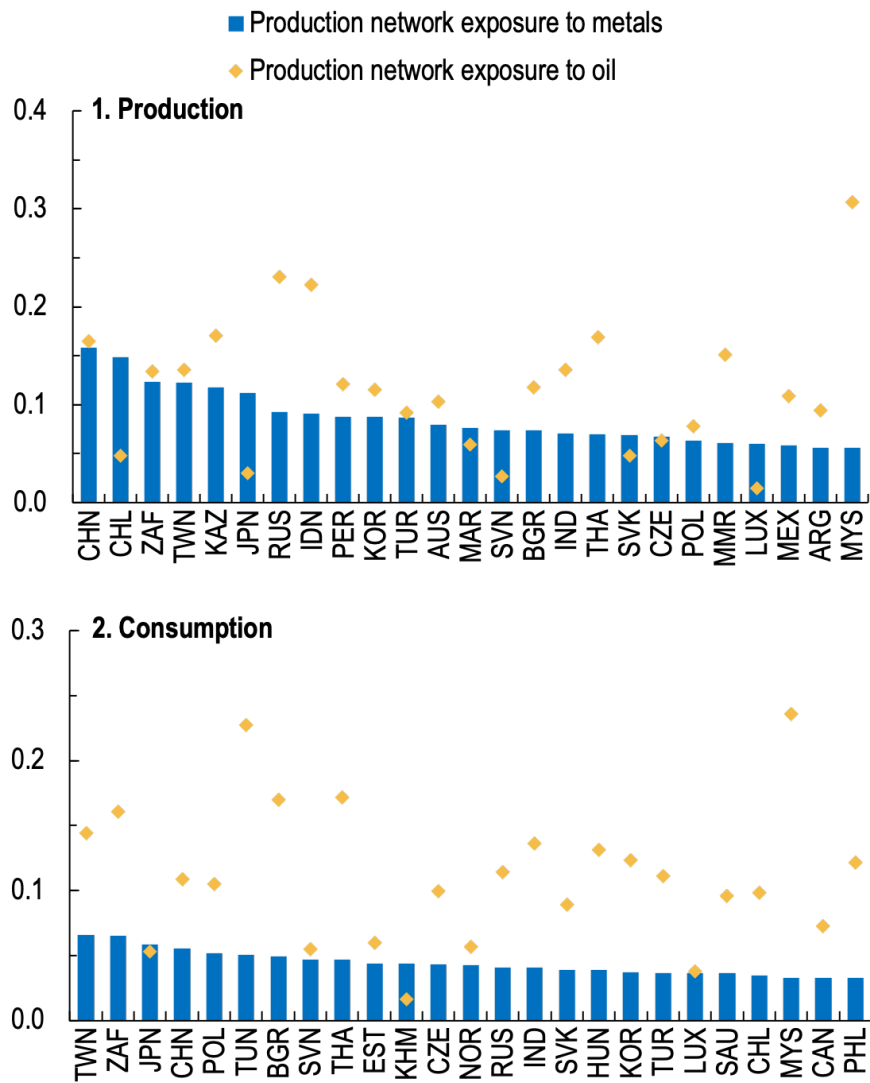
Several results stand out in Figure 2. First, the heterogeneity in the exposure of production is starker than the one in the exposure of consumption across countries. This is because consumption preferences are likely similar across countries, leading to less heterogeneity in consumption exposure. At the same time, the location of production of tradable goods is independent from the location of consumption, creating more heterogeneity in production exposure. Moreover, differences in technological adoption also induce significant heterogeneity in sectoral exposures to metals and oil across countries. For instance, while the total metal exposure of the motor vehicle sector in the average country is 16 percent, the 10th percentile is 5 percent and the 90th percentile is 34 percent.

Second, metals are more relevant than oil in production in seven out of the top twenty-five countries. Nevertheless, because metals are less embedded in downstream sectors, once consumptions shares are used to aggregate, only three countries display larger ex-

posure to metals than oil. Indeed, the median CPI exposure is three times larger for oil than for metals.

Third, there are significant cross-country differences. While the median country has a metal exposure of 0.03, a country in the 90th percentile has an exposure that is five times larger than a country in the 10th percentile of the distribution.

Figure 2: Countries' Input-Output Exposure to Metals and Oil (Percent)



Note: The figure depicts countries' production network exposure for the year 2018. Data labels in the figure use International Organization for Standardization (ISO) country codes. Sectoral exposures are weighted by: i) sectors' value added share in total value added (top panel) and ii) sectors' final consumption share (bottom panel).

3 Theoretical Framework for Cross-country Regressions

Having established the importance of metals in production networks, we turn to a theoretical framework where a key element is the open economy aspect. This framework helps to understand the inflationary effects of a shock to imported metals prices, which the small open economy takes as given. Metals and oil are highly traded intermediate inputs for production whose prices are determined in global markets. Therefore, we explicitly separate between imported metals used as intermediate inputs by domestic sectors and domestically produced metals supplied as intermediate inputs to domestic sectors. The model will provide testable implications in terms of the heterogeneity in exposures to metals and oil price shocks at the country-level.

The model is based on the work of [Silva \(2023\)](#), who incorporates production networks into a small open economy framework to study inflation. In this model, there exists a collection of N goods and services produced within the country with each good identified as i . These domestically produced goods have multiple uses: they can be consumed within the country, serve as intermediate inputs for other domestic industries, or be exported. The set of imported goods is symbolized by M with each imported item denoted by m . These imports can either be used as intermediate inputs in the production of domestic goods or consumed directly as final products. Additionally, there exists a set F that comprises various factors of production, each factor labeled as f .

In this section, we first outline the model, then review the key equation and discuss its application to analyzing metal supply shocks. We follow the notation in [Silva \(2023\)](#). Hence, matrices and vectors are denoted using bold letters (i.e., \mathbf{Z}). The transpose of a matrix \mathbf{Z} is \mathbf{Z}^T . Log changes are expressed as $d\log Z = \hat{Z}$.

3.1 Representative Household

A representative household consumes both domestic and foreign goods, deriving instantaneous utility represented by $U(\mathbf{C}_D, \mathbf{C}_M)$, where $\mathbf{C}_D = \{C_i\}_{i \in N}$ indicates domestic goods consumption and $\mathbf{C}_M = \{C_m\}_{m \in M}$ represents foreign goods consumption. Consumption of these goods is tied to their respective price vectors $\mathbf{P}_D = \{P_i\}_{i \in N}$ for domestic and $\mathbf{P}_M = \{P_m\}_{m \in M}$ for foreign goods, typically in local currency unless specified otherwise. The utility function $U(\cdot)$ is assumed to scale linearly with its inputs. This household owns and supplies all production factors at fixed prices. It seeks to minimize costs given the price vectors of both domestic and foreign goods:

$$PC = \min_{\mathbf{C}_D, \mathbf{C}_M} \sum_{i \in N} P_i C_i + \sum_{m \in M} P_m C_m,$$

$$\text{subject to } U(\mathbf{C}_D, \mathbf{C}_M) \geq \bar{U}.$$

The solution to this problem yields a price index that is a function of good prices:

$$P = P(\mathbf{P}_D, \mathbf{P}_M).$$

Up to a first order, prices in this economy satisfy:

$$\hat{P} = \bar{\mathbf{b}}_D^T \hat{\mathbf{P}}_D + \bar{\mathbf{b}}_M^T \hat{\mathbf{P}}_M,$$

where $\bar{\mathbf{b}}_D = \{\bar{b}_i\} = \frac{P_i C_i}{E}$, $\bar{\mathbf{b}}_M = \{\bar{b}_m\} = \frac{P_m C_m}{E}$, and $E = \mathbf{P}_D^T \mathbf{C}_D + \mathbf{P}_M^T \mathbf{C}_M = PC$ are the expenditure shares of domestically produced goods (\bar{b}_i), imported goods (\bar{b}_m), and total expenditure (E), respectively. The consumer's budget constraint is given by:

$$PC + T = \sum_{f \in F} W_f L_f + \sum_{i \in N} \Pi_i,$$

where T is an exogenous net transfer to the rest of the world.

3.2 Firms

Within each sector i , there is a representative firm with a production function of the form:

$$Q_i = Z_i F_i (\{L_{if}\}_{f \in F}, \{M_{ij}\}_{j \in N}, \{M_{im}\}_{m \in M}),$$

where Z_i is sector-specific productivity, L_{if} is the demand for factor f by firm i , M_{ij} represents intermediate input demand for good $j \in N$ by firm i , and M_{im} represents input demand for imported good $m \in M$.

The cost minimization of firm i delivers a marginal cost that only depends on productivity and input prices:

$$MC_i = MC_i(Z_i, \mathbf{P}_D, \mathbf{P}_M, \mathbf{W}),$$

where $\mathbf{W} = \{W_f\}_{f \in F}$ is a vector of factor prices. The assumption of constant returns to scale is key for the result that marginal costs are independent of the scale of production. Moreover, in perfectly competitive markets with constant returns to scale, each firm operates at zero profit:

$$P_i Q_i = \sum_{f \in F} W_f L_{if} + \sum_{j \in N} P_j M_{ij} + \sum_{m \in M} P_m M_{im} \quad \text{for all } i \in N.$$

3.3 Equilibrium

The market clearing conditions for sectoral output are given by:

$$Q_i = C_i + X_i + \sum_{j \in N} M_{ji} \quad \text{for each } i \in N.$$

X_i is an exogenous variable so that there is always a price that clears the market for each domestically produced good, even if the good is exported.

3.4 Nominal Anchor

As this model is in real terms, a money rule is needed. Assume the following cash-in-advance constraint:

$$PC \leq M^u = E.$$

In the small open economy, the central bank, with money supply (M^u) as an exogenous factor, dictates nominal spending (E) to maintain a set benchmark. By monitoring consumption (C) affected by real factors, the central bank can implement any price level (P) accordingly.

Equilibrium is achieved by taking factor prices (W) and expenditure (E) as given to pinpoint both feasible and equilibrium allocations. Households select (C_D, C_M) to maximize utility constrained by their budget based on sequences (W, P_D, P_M, π) and exogenous parameters (T). Given (W, P_D, P_M) and production technologies, firms choose (L_i, M_i) to minimize production costs. Market clearance is achieved given X . The cash-in-advance constraint is binding: $P_C = M^u = E$.

3.5 Changes in the Price Index

We study the role of imported goods prices and production networks in driving inflation through a log-linear approximation of changes in the consumer price index P . This approach examines inflation from a cross-sectional view rather than the traditional time-based analysis. The main result in [Silva \(2023\)](#) is summarized in Proposition 1. In particular, consider a perturbation $(\widehat{Z}, \widehat{W}, \widehat{P}_M)$ around some initial equilibrium. Up to a first order, changes in the aggregate price index \widehat{P} satisfy:

$$\widehat{P} = -(\bar{\lambda}^T - \tilde{\lambda}^T) \widehat{Z} + (\bar{\Lambda}^T - \tilde{\Lambda}^T) \widehat{W} + (\bar{b}_M^T + \tilde{b}_M^T) \widehat{P}_M, \quad (3)$$

where

$$\tilde{\lambda}^T = \bar{x}^T \Psi_D; \quad \tilde{\Lambda}^T = \bar{x}^T \Psi_D A; \quad \tilde{b}_M^T = \bar{b}_D^T \Psi_D \Gamma; \quad \Psi_D = (I - \Omega)^{-1}.$$

The first two terms contain the effects of shocks to sectoral productivity and wages. The last term considers the effect of changes in import prices. Import prices influence inflation via intersectoral connections and the network-adjusted share of import consumption. Note that the input-output network Ω considers only domestic input-output linkages.

3.6 The Mechanism

Consider fixed factor prices and the absence of productivity shocks, $\widehat{W} = \mathbf{0}_F$ and $\widehat{Z} = \mathbf{0}_N$ and examine the effects of import price shocks. Equation (3) becomes:

$$\widehat{P} = \left(\bar{\mathbf{b}}_M^T + \bar{\mathbf{b}}_D^T \Psi_D \Gamma \right) \widehat{P}_M, \quad (4)$$

where $\bar{\mathbf{b}}_M$ is the vector of imported consumption share, Ψ_D is domestic Leontief inverse matrix, $\bar{\mathbf{b}}_D^T$ is the vector of domestic consumption shares, and Γ is the vector of sectoral imported intermediate input shares.

Equation (4) highlights the importance of accounting for both direct import consumption ($\bar{\mathbf{b}}_M$), where consumers purchase imported goods directly, and indirect import consumption through domestic production ($\bar{\mathbf{b}}_D^T \Psi_D \Gamma$), where consumers purchase imports indirectly by buying domestic goods that use imports as inputs, either directly or indirectly. The intuition behind the second term is that the domestic production network is aggregated based on each sector's expenditure on imports and households' final consumption of each sector.

Turning to metals, this theoretical framework helps us understand the inflationary effects of a shock to imported metals prices, which the small open economy takes as given. Treating metals as the imported goods in the framework, equation (4) shows that an increase in metal prices m elevates producer h 's marginal costs via Γ_{hm} , pushing up prices for their products P_h , and indirectly affecting the prices of domestically produced goods

through intermediate production networks (Ψ_D). This impact, along with sectoral spending on metals, reflects on the consumer price index through consumption shares (\bar{b}_D). Naturally, it can also affect the consumer price index through direct consumer purchases of metals as final goods (\bar{b}_m).

In contrast to the stylized facts, where we used the total input-output table (the sum of domestic and imports) directly, here we can isolate the inflationary effect of an exogenous foreign supply shock, focusing specifically on how external shocks influence production costs and propagate through the economy. Since metal production is usually geographically concentrated, this framework is well-suited for studying the inflationary effects of metal supply shocks in most economies that are metals (oil) importers.⁵

4 Empirical Evidence

This section empirically tests the predictions of the theoretical framework on a balanced panel of 39 economies. We start by describing data sources and the calculation of network exposure. Then, we show that copper price shocks have significant effects on core and headline inflation, especially for the countries with high network exposure to metals. We also compare these effects to those of oil price shocks.

4.1 Data and Descriptive Statistics

4.1.1 Network Exposure to Metals and Oil

We calibrate the production network model for a sample of 39 economies using OECD input-output tables. The data cover 45 sectors, include imports of intermediates, which are sizable for the cases of metals and oil.

⁵For large metal-producing countries, such as Chile, this approach may be less applicable. In those cases, metal price increases not only raise production costs through the input-output network but also generate an income effect, which can contribute to inflation through the demand channel from the cost-push inflation focused in this paper.

Country i 's network exposure to metals and oil (z_i) can be constructed by applying equation (4) for each country. In particular, \bar{b}_M^T is the consumption expenditure share of imported metals (oil) in total household consumption expenditure (a scalar). This measures the direct exposure, without considering network connections. \bar{b}_D^T , Ψ_D , Γ_m , \widehat{P}_m are the vector of sectoral domestic consumption expenditures, the domestic IO network (Leontief inverse matrix), the vector of sectoral shares of imported metals (oil) in gross output, and the log change in international metals (oil) prices. The second term in equation (4) measures the indirect exposure via production networks.

All vectors and matrices can be calculated from the IO table. As in the previous section, for exposure to metals, we focus on primary metals: mining and quarrying of non-energy producing products and basic metals. Fabricated metal products are included in the robustness checks. It is important to note again that for oil, due to the lack of sector granularity, we use fossil fuels, including mining and coke and refined petroleum products. See Table B.3 in the appendix for the full list of OECD sectors.

Data show significant cross-country differences in exposure similarly to section 2.⁶ In our sample, the mean exposure to metals (oil) is 0.005 (0.03), with a standard deviation of 0.003 (0.01). According to the theoretical framework, this heterogeneity can be attributed to several factors: First, reliance on metals (oil) imports plays a significant role – coun-

⁶Notice that the closed-economy (CE) model augmented with imports and the small-open-economy (SOE) present a correlation of 0.82 (0.68) for metals (oil). These exposures do present differences in their magnitudes. The SOE model is preferable in terms of ranking heterogeneity at the country-level, however, the CE model better captures the exposure magnitudes. A comparison between the two approaches shows how the SOE model treats the domestic commodity sector (including oil and metals) as a separate sector from the oil and metals imported. In this sense, the SOE model provides a more direct empirical test of the model as we estimate the effect of international metal prices, rather than country-specific metals productivity, on inflation. Mathematically,

$$\begin{aligned} d\log CPI_t^{CE} &= \left(\bar{\mathbf{b}}_{Total}^T (I - \mathbf{\Omega}_{Total})_{metals}^{-1} \right) \widehat{\mathbf{Z}}_{metals} \\ d\log CPI_t^{SOE} &= \left(\bar{b}_{metals} + \bar{\mathbf{b}}_D^T (I - \mathbf{\Omega})^{-1} \mathbf{\Gamma}_{metals} \right) \widehat{P}_{metals}. \end{aligned}$$

The main difference between the two measures is that one captures the effect of productivity shocks, while the SOE captures the direct effect of international prices (assuming productivity fixed). By doing so, in the SOE model, the direct exposure of each sector is given by the share of imported metals as intermediates, which then propagates via domestic production linkages.

tries that depend heavily on imports tend to exhibit higher exposure. Second, differences in production networks across countries. For instance, while the motor vehicle sector's exposure to metals is around 10% in both Germany and France, it is 30% in China. This reflects variations in technological adoption, and could also be driven by differences in production cost components across economies, such as Germany's and France's relatively higher labor costs and potentially higher R&D expenditure compared to China. Lastly, household spending patterns on goods vary across countries. Zooming in on car industry again, while car exposure to metals is similar in both Germany and France, Germans spend more on cars than the French, leading to higher overall exposure in Germany.⁷

In our sample, Japan stands out as an outlier, with the highest exposure to metals – approximately eight times that of the country with the lowest exposure. At the same time, Japan has the lowest exposure to oil among the sampled countries. This unique position can be attributed to the combination of all three factors discussed above.

Although the network exposure vary across countries, for each country, it remains relatively stable over time. For our empirical analysis, we use the exposure of 2018.

4.1.2 Commodity Price Shocks

To correct for the potential endogeneity in metals and oil prices, we use commodity price shocks identified in the literature as instruments for commodity prices. There is a small and recent literature identifying shocks to metal prices (see, e.g., [Stuermer, 2018](#); [Jacks and Stuermer, 2020](#); [Vega-Olivares, 2022](#); [Boer, Pescatori, and Stuermer, 2024](#); [Baumeister, Ohnsorge, and Verduzco-Bustos, 2024](#)). We use copper supply shocks from [Baumeister, Ohnsorge, and Verduzco-Bustos \(2024\)](#) and oil supply shocks sourced from [Baumeister and Hamilton \(2019\)](#). Figure B.1 in the appendix shows the impulse responses of real copper price and real oil prices to them. The persistence of the copper and oil price shocks are roughly similar.

⁷The consumption share of domestically produced cars is 0.84% in France and 3.29% in Germany. Including imported cars, the shares are 3.2% and 4.8%, respectively.

4.2 Inflationary Effect of Copper Price Shocks

We start by estimating the effects of copper price shocks on inflation using instrumental variable (IV) local projections (LP) methods (Jordà (2005)). We estimate the following panel regressions:

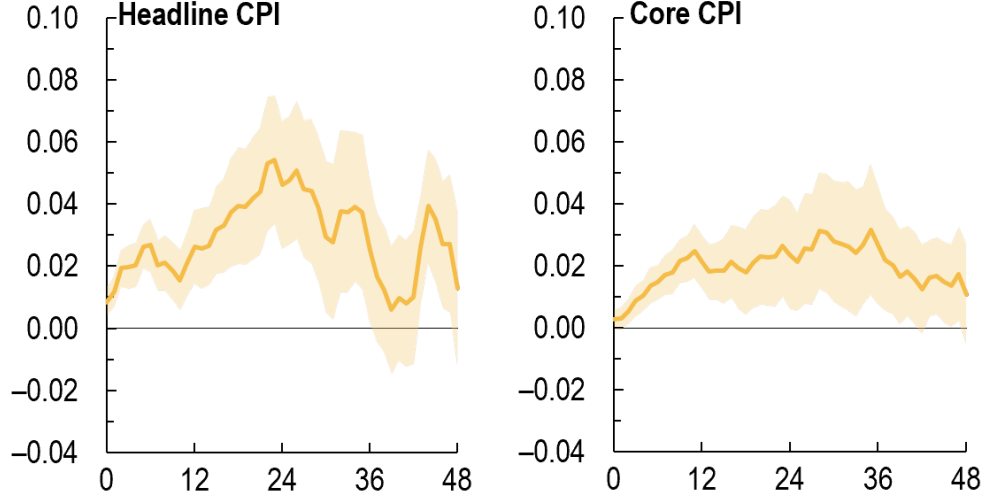
$$\log CPI_{it+h} - \log CPI_{it-1} = \alpha_i^h + \beta^h p_t^{copper} + \sum_{l=0}^L \phi_{xl}^h X_{it-l} + \epsilon_{it+h} \quad \text{for } h = 0, 1, 2, \dots, \quad (5)$$

where CPI_{it+h} is the consumer price index (headline or core) of country i at time $t + h$. α_i^h is the country fixed effects. p_t^{copper} is the log of real copper price at time t .⁸ The set of controls X_{it-l} includes $L = 12$ lags of real copper price and the log change of CPI, as well as a global economic activity index from Baumeister, Korobilis, and Lee (2022), US 1 year treasury bill yield, bilateral exchange rates, and the Gilchrist and Zakrajšek (2012) excess bond premium (EBP) for the US. We also include contemporaneous and 12 lags of logs of food prices and oil prices. The regression is estimated using monthly data from 1996:m2 to 2019:m12, for a balanced panel with 39 countries.

Figure 3 shows the average response of headline CPI inflation (left) and core CPI inflation (right), in cumulative terms, to a one percent increase in copper prices. Copper price shocks have significant effects on both headline and core inflation. A 1 percent increase in copper prices raises both headline and core inflation by about 0.02 p.p. within 12 months. Responses peak around 2 to 3 years after the shock, reaching 0.05 p.p. for headline and 0.03 p.p. for core.

⁸Prices are deflated using the trend of US CPI derived from the Hodrick-Prescott filter.

Figure 3: Impulse Responses of Inflation to Copper Supply Shocks



Note: Cumulative impulse responses of headline CPI inflation (left) and core CPI inflation (right) to a one percent increase in copper prices (using the copper supply shock from [Baumeister, Ohnsorge, and Verduzco-Bustos \(2024\)](#) as an instrument). The x-axis denotes months after the shock. Shaded areas are 90% confidence bands based on cluster-robust standard errors.

To test the production network mechanism empirically, we next include the interaction terms between the copper prices and country's exposure to metals into our LP-IV regressions:

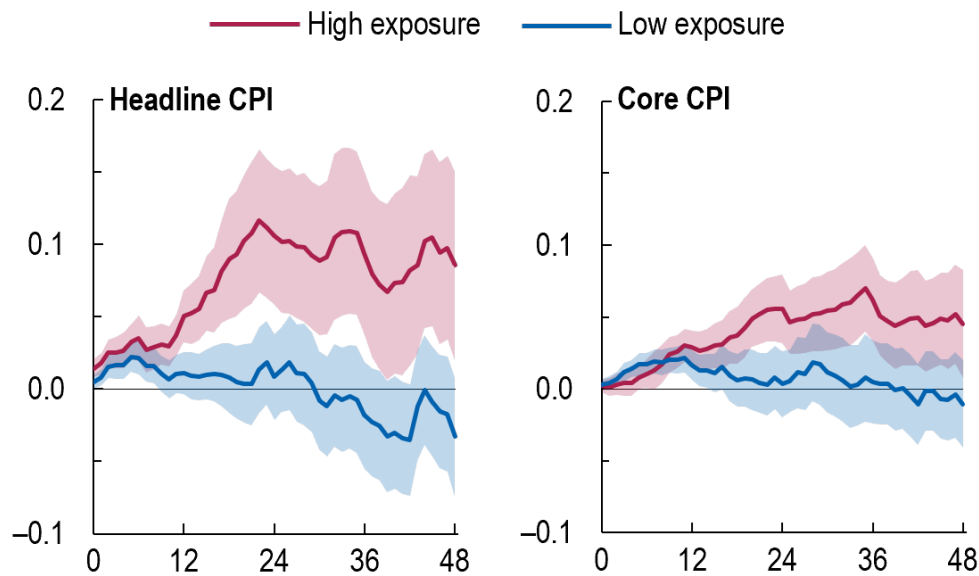
$$\log CPI_{it+h} - \log CPI_{it-1} = \alpha_i^h + \beta_1^h p_t^{\text{copper}} + \beta_2^h p_t^{\text{copper}} (z_i - \bar{z}) + \sum_{l=0}^L \phi_{xl}^h X_{t-l}^i + \epsilon_{it+h} \quad , \quad (6)$$

where z_i represents country i 's measure of primary metal exposure as defined in equation (4). \bar{z} is the average exposure across countries. The term $\beta_1^h p_t^{\text{copper}} + \beta_2^h p_t^{\text{copper}} (z_i - \bar{z})$ captures the impact of negative copper supply shocks that increase real copper prices.

We evaluate the impact of copper supply shocks for countries with a metal exposure at the 90th and 10th percentiles of our sample – that is, a metal exposure of 0.008 and 0.002, respectively. Figure 4 shows the results. The effect of a copper price increase is significantly larger for countries with high metal exposure. The 12-months cumulative effect of a 1 percent increase in copper prices leads to positive effects of 0.05 p.p. and 0.03 p.p. on headline and core, respectively. For countries with low network exposure, the effect

is 0.01 and 0.02 p.p. More importantly, the heterogeneity effect lasts long. For countries with high network exposure, the inflationary effect of copper price shocks builds up over time, reaching its maximum effect of over 0.1 p.p. on headline and 0.06 p.p. on core between 2 to 3 years, and remain elevated. After 48 months after the shock, we still observe a 0.05 p.p.increase in core inflation.

Figure 4: Impulse Responses of Inflation to Copper Supply Shocks: Countries with High Metals Exposure versus Low Metals Exposure



Note: Cumulative impulse responses of headline CPI inflation (left panel) and core (right panel) to a one percent increase in copper prices (using the copper supply shock from [Baumeister, Ohnsorge, and Verduzco-Bustos \(2024\)](#) as an instrument). Red/Blue line denotes base metal exposure at the 90th/10th percentile of the sample in 2018. Shaded areas are 90% confidence bands. The x-axis denotes months after the shock.

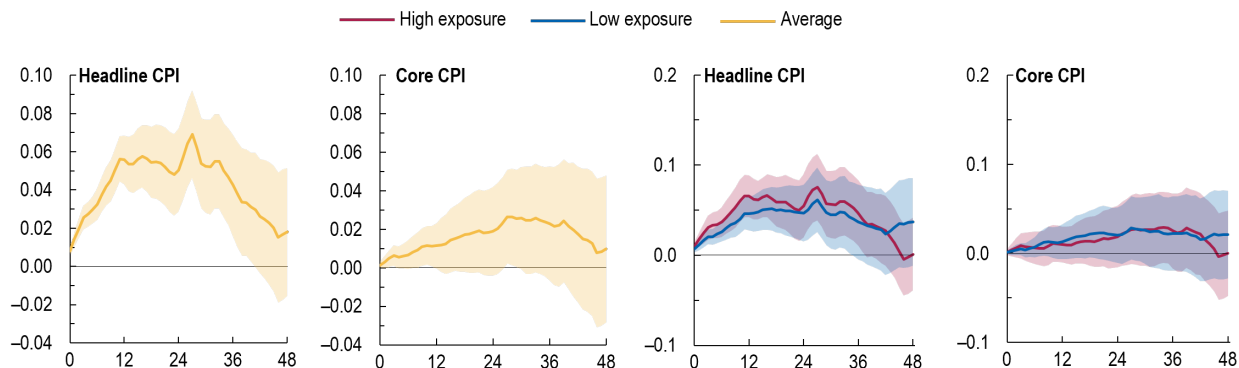
4.3 Inflationary Effect of Oil Price Shocks

We now compare the effects of oil price shocks. We repeat our baseline regressions, using oil prices instrumented by [Baumeister and Hamilton \(2019\)](#)'s oil supply shocks. We include contemporaneous values and lags of copper prices as controls, mirroring the earlier section where contemporaneous values and lags of oil prices were used as controls.

Figure 5 shows the response of inflation to a one percent increase in oil prices. Similar to the previous section, we first estimate the average inflationary effect of oil supply

shock, using the regression without the interaction term between shock and exposure. Then, we evaluate the impact of oil supply shocks at the 90th and 10th percentiles of oil exposure, 0.048 and 0.015, respectively.

Figure 5: Impulse Responses of Inflation to Oil Supply Shocks



Note: Cumulative impulse responses of headline CPI inflation and core CPI inflation to a one percent increase in oil prices (using the oil supply shock from [Baumeister and Hamilton \(2019\)](#) as an instrument). Yellow line denotes the average responses. Red/Blue line denotes oil exposure at the 90th/10th percentile of the sample in 2018. Shaded areas are 90% confidence bands. The x-axis denotes months after the shock.

Compared to the effects of copper price shocks, three key results stand out. First, oil supply shocks have a substantial impact on headline inflation, peaking at 0.07 percentage points after 2 to 3 years, but they have no significant effect on core inflation. Second, there is no significant heterogeneity in the impact based on oil exposure levels. Third, the impact on headline inflation diminishes over the long term, in contrast to the highly persistent impact of metals on core inflation in high-exposure countries.

In the previous sections, we documented high oil exposures, on average, which potentially suggest that consumer prices should be more sensitive to oil price shocks than to metals price shocks. How do we then understand the muted response of core inflation? The difference between headline and core inflation lies in the exclusion of the food and energy sectors. Our results suggest that oil shocks primarily spillover into the energy sector and food prices, likely because agriculture relies heavily on fuel for production and transportation. However, the increase in marginal costs driven by the shock does not

seem to materialize in other sectors of the production network.

Our results on oil are consistent with [Kilian and Zhou \(2023\)](#). The authors examine the inflationary effects of energy price shocks in five major economies and find no support for the view that energy price shocks cause high and sustained inflation. Specifically, they find significant effects on core inflation only in the Euro area and the U.K. Additionally, for headline inflation, their results for Japan exhibits the smallest response, which is consistent with our exposure ranking: the Euro area and the U.K. have relatively high exposure, while Japan has the lowest.

For the lack of significant heterogeneity in the transmission of oil shocks, one reason could be that our oil exposure measure includes all fossil fuels. It is possible that some economies with high oil exposure are heavily reliant on coal and gas rather than oil, and thus less sensitive to oil price shocks. Moreover, our sample does not exclude oil exporters, where inflation may be highly sensitive to oil price shocks through an alternative demand channel. In this case, rising oil prices lead to increased income, which in turn drives up inflation.

Finally, our metal exposure could be underestimating the importance of metals. In the stylized facts, we showed that oil and metals enter the production network very differently, with oil mainly used as fuel and more involved in downstream sectors, and metals as key inputs in the production of capital and investment goods. However, due to data availability we do not use information on countries' investment network. As shown in [Foerster, Sarte, and Watson \(2011\)](#) and [Vom Lehn and Winberry \(2022\)](#), the investment network can play a crucial role in amplifying shocks.

5 Robustness

We examine the sensitivity of our empirical results to different data and specifications. First, we calculate the metal exposure including fabricated metals manufacturing data

in addition to mining and basic metals sector data. We find that after including fabricated metals, the average metal exposure doubled, and the heterogeneity between high and low exposure economies becomes even more pronounced (Appendix Figure C.2).

Second, we study in more detail the importance of the production network. We run our local projections using two alternative measures: a) the consumption expenditure share of imported metals (or oil) (b_M), excluding indirect network linkages, and b) the net import share of metals (or oil) for each country. We find that, for the transmission of copper price shocks, the heterogeneity between high and low exposure is no longer significant, highlighting the importance of the production network for shock propagation (Appendix Figure C.3 and Figure C.4).

Third, we examine how replacing the copper price series by a base metal price index affects results. We construct a weighted average of six base metal prices. We use copper supply shocks as an instrument to study the impact of changes in the base metal price index. The responses suggest some heterogeneity, though the overall differences are not statistically significant at the 90% confidence level (Appendix Figure C.5).

Finally, we conduct robustness checks testing whether our baseline results remain robust to: (i) including the COVID-19 period; (ii) varying the set of control variables, specifically by substituting the 1-year treasury with the 2-year treasury or by reducing the number of controls. We find that this is the case.

6 Conclusion

This paper establishes that primary metals are an important source for inflation due to their role as intermediate inputs for investment goods in the production network. Given how they enter in the production network, metals supply shocks can have significant, persistent effects on core and headline inflation. In contrast, oil supply shocks mostly

impact headline inflation.

While shocks to oil supply affect only one commodity, supply shocks to metals markets are more dispersed. Supply shocks to each of the metals markets may not hit at the same time. This has made so far the magnitude of supply shocks to the aggregate primary metals sector smaller than in the petroleum sector, helping to tame the impact on inflation.

One implication of our finding is that if the world economy became more metals intense due to the energy transition, inflationary shocks could be more persistent. As there could also be more metals supply shocks due to trade fragmentation, central banks need to be aware of this risk.

Would this make the work of central banks easier or more difficult? Central banks have typically looked through oil price shocks, provided these were not excessively large. As the energy system moves away from fossil fuels, however, this approach may not work well when facing major fluctuations in metals prices. The monetary authority may, thus, eventually need to react to metals supply shocks as these shocks have a more persistent effect on core inflation. Central banks need to be prepared for a potentially more metals-intense global economy where metals price shocks will gain importance and their effects on inflation could be initially less visible but more persistent.

References

- Albrizio, Silvia, John Bluedorn, Christoffer Koch, Andrea Pescatori, and Martin Stuermer. 2023. "Sectoral Shocks and the Role of Market Integration: The Case of Natural Gas." In *AEA Papers and Proceedings*, vol. 113. American Economic Association, 43–46.
- Alvarez, Jorge, Mehdi Benatiya Andaloussi, Chiara Maggi, Alexandre Sollaci, Martin Stuermer, and Petia Topalova. 2023. "Goeconomic Fragmentation and Commodity Markets." *IMF Working Paper* 2023/201.

- Auer, Raphael A, Andrei A Levchenko, and Philip Sauré. 2019. "International inflation spillovers through input linkages." *Review of Economics and Statistics* 101 (3):507–521.
- Balke, Nathan S and Mark A Wynne. 2000. "An equilibrium analysis of relative price changes and aggregate inflation." *Journal of Monetary Economics* 45 (2):269–292.
- Baqae, David Rezza and Emmanuel Farhi. 2019. "The Macroeconomic Impact of Microeconomic Shocks: Beyond Hulten's Theorem." *Econometrica* 87 (4):1155–1203.
- Baumeister, C., F. Ohnsorge, and G. Verduzco-Bustos. 2024. "Evaluating the Role of Demand and Supply Shocks in Copper and Aluminum Price Fluctuations." *Unpublished Manuscript* .
- Baumeister, Christiane and James D Hamilton. 2019. "Structural interpretation of vector autoregressions with incomplete identification: Revisiting the role of oil supply and demand shocks." *American Economic Review* 109 (5):1873–1910.
- Baumeister, Christiane, Dimitris Korobilis, and Thomas K Lee. 2022. "Energy markets and global economic conditions." *Review of Economics and Statistics* 104 (4):828–844.
- Benguria, Felipe, Felipe Saffie, and Sergio Urzúa. 2024. "The transmission of commodity price super-cycles." *Review of Economic Studies* 91 (4):1923–1955.
- Bernanke, Ben and Olivier Blanchard. 2023. "What caused the US pandemic-era inflation?" *Peterson Institute for International Economics Working Paper* (23-4).
- Blanchard, Olivier J and Jordi Gali. 2007. "The Macroeconomic Effects of Oil Shocks: Why are the 2000s so different from the 1970s?" *NBER Working Paper* 13368.
- Boer, Lukas, Andrea Pescatori, and Martin Stuermer. 2024. "Energy Transition Metals: Bottleneck for Net-Zero Emissions?" *Journal of the European Economic Association* 22.
- Di Pace, Federico, Luciana Juvenal, and Ivan Petrella. 2024. "Terms-of-trade shocks are not all alike." *American Economic Journal: Macroeconomics* .

- Foerster, Andrew T, Pierre-Daniel G Sarte, and Mark W Watson. 2011. "Sectoral versus aggregate shocks: A structural factor analysis of industrial production." *Journal of Political Economy* 119 (1):1–38.
- Gagliardone, Luca and Mark Gertler. 2023. "Oil Prices, Monetary Policy and Inflation Surges." *NBER Working Paper* (w31263).
- Gilchrist, Simon and Egon Zakrajšek. 2012. "Credit spreads and business cycle fluctuations." *American Economic Review* 102 (4):1692–1720.
- Gopinath, Gita, Pierre-Olivier Gourinchas, Andrea Presbitero, and Petia B Topalova. 2024. "Changing Global Linkages: A New Cold War?" *IMF Working Paper* 2024/076.
- Ha, Jongrim, M Ayhan Kose, and Franziska Ohnsorge. 2023. "One-stop source: A global database of inflation." *Journal of International Money and Finance* 137:102896.
- Hamilton, James D. 1983. "Oil and the macroeconomy since World War II." *Journal of Political Economy* 91 (2):228–248.
- IEA. 2022. "The Role of Critical Minerals in Clean Energy Transitions." Report, International Energy Agency, Paris.
- Jacks, David S and Martin Stuermer. 2020. "What drives commodity price booms and busts?" *Energy Economics* 85:104035.
- Jordà, Òscar. 2005. "Estimation and inference of impulse responses by local projections." *American Economic Review* 95 (1):161–182.
- Kilian, Lutz. 2009. "Not all oil price shocks are alike: Disentangling demand and supply shocks in the crude oil market." *American Economic Review* 99 (3):1053–1069.
- Kilian, Lutz and Xiaoqing Zhou. 2023. "Oil Price Shocks and Inflation." In *Handbook of Inflation*. Forthcoming.
- Long Jr, John B and Charles I Plosser. 1983. "Real business cycles." *Journal of Political Economy* 91 (1):39–69.

- Miranda-Pinto, Jorge, Andrea Pescatori, Ervin Prifti, and Guillermo Verduzco-Bustos. 2023. "Monetary policy transmission through commodity prices." *IMF Working Paper* 2023/215.
- Nakov, Anton and Andrea Pescatori. 2010. "Oil and the great moderation." *The Economic Journal* 120 (543):131–156.
- Organisation for Economic Cooperation and Development. 2023. "OECD Inter-Country Input-Output Tables." Report, Organisation for Economic Cooperation and Development, Paris. URL <https://stats.oecd.org/wbos/fileview2.aspx?IDFile=d1ab2315-298c-4e93-9a81-c6f2273139fe>.
- Schmitt-Grohé, Stephanie and Martín Uribe. 2018. "How important are terms-of-trade shocks?" *International Economic Review* 59 (1):85–111.
- Silva, Alvaro. 2023. "Inflation in disaggregated small open economies." Tech. rep., Mimeo, The University of Maryland.
- Silva, Alvaro, Petre Caraiani, Jorge Miranda-Pinto, and Juan Olaya-Agudelo. 2024. "Commodity Prices and Production Networks in Small Open Economies." *Journal of Economic Dynamics and Control* 168.
- Simon, R. 2024. "Why is inflation so stubborn? Ask your local small business." *Wall Street Journal* May 13.
- Stuermer, Martin. 2018. "150 years of boom and bust: what drives mineral commodity prices?" *Macroeconomic Dynamics* 22 (3):702–717.
- United Nations. 2008. "International Standard Industrial Classification of All Economic Activities Revision 4." Report, United Nations, New York.
- US Bureau of Economic Analysis. 2024. "BEA Industry and Commodity Codes and NAICS Concordance." Report, US Bureau of Economic Analysis, Washington DC.
- Vega-Olivares, P. 2022. "Macroeconomic Effects of Labor Strikes at Copper Mines in Chile." *Master Thesis, Catholic University of Chile* .

Vom Lehn, Christian and Thomas Winberry. 2022. "The investment network, sectoral comovement, and the changing US business cycle." *The Quarterly Journal of Economics* 137 (1):387–433.

A Data

We collect monthly data on nominal commodity prices and indexes for the period January 1996 to December 2019. For oil prices, we use the average of Brent and WTI. For food prices we employ the Food and Beverage Index from IMF Primary Commodity Price system.

We obtain headline CPI and core CPI data from the global inflation database assembled by [Ha, Kose, and Ohnsorge \(2023\)](#). For control variables, we use the Global economic activity index from [Baumeister, Korobilis, and Lee \(2022\)](#), US 1-year treasury bill yield from FRED, bilateral exchange rates from BIS, and the [Gilchrist and Zakrajšek \(2012\)](#) excess bond premium (EBP) for the USA.

We also collect information on input-output data from the BEA for the US (71 sectors) and from the OECD (45 sectors) for cross-country comparisons for the year 2018. See Tables [B.1](#) and [B.3](#) for details on the sectoral classification.

To correct for the potential endogeneity in copper prices, we use the estimated copper supply shock series from [Baumeister, Ohnsorge, and Verduzco-Bustos \(2024\)](#) for the same period. For oil supply shocks, we use [Baumeister and Hamilton \(2019\)](#).

B Definitions

B.1 OECD Data

The combination of [Organisation for Economic Cooperation and Development \(2023\)](#) and [United Nations \(2008\)](#) defines the mining and quarrying of non-energy producing products sector to include mining of iron ores, non-ferrous metal ores, uranium and thorium ores, other non-ferrous metal ores, quarrying of stone, sand and clay, mining and quarrying n.e.c., mining of chemical and fertilizer minerals, extraction of peat, extraction of salt as well as other mining and quarrying n.e.c. The basic metals sector includes manufacturing of basic iron and steel, manufacturing of basic precious and other non-ferrous metals, casting of metals, casting of iron and steel as well as casting of non-ferrous metals.

The sector for mining and quarrying of energy-producing products includes mining

of hard and lignite coal as well as the extraction of crude petroleum and natural gas.

B.2 US Bureau of Economic Analysis Data

According to the [US Bureau of Economic Analysis \(2024\)](#), the mining sector, except oil and gas, includes coal mining, iron, gold, silver, and other metal ore mining, copper, nickel, lead, and zinc mining, stone mining and quarrying as well as other nonmetallic mineral mining and quarrying. The primary metals sector encompasses iron and steel mills and manufacturing from purchased steel (notably iron and steel mills and ferroalloy manufacturing and steel product manufacturing from purchased steel) as well as nonferrous metal production and processing and foundries. The latter includes primary and secondary smelting and refining of non-ferrous metals but also rolling, drawing, extruding, and alloying of non-ferrous metals.

The definition of the oil and gas extraction sector by the is straight forward. The non-durable goods manufacturing sector for petroleum and coal products includes petroleum refineries, asphalt paving mixture and block manufacturing, asphalt shingle and coating materials manufacturing as well as other petroleum and coal products manufacturing. For simplicity, we refer to this as the “oil sector”.

Table B.1: BEA Sectoral Classification

Farms	Water transportation
Forestry, fishing, and related activities	Truck transportation
Oil and gas extraction	Transit and ground passenger transportation
Mining except oil and gas	Pipeline transportation
Support activities for mining	Other transportation and support activities
Utilities	Warehousing and storage
Construction	Publishing industries (except internet)
Wood products	Motion picture and sound recording industries
Nonmetallic mineral products	Broadcasting and telecommunications
Primary metals	Data processing, internet publishing, and other information services
Fabricated metal products	Federal Reserve banks, credit intermediation, and related activities
Machinery	Securities, commodity contracts, and investments
Computer and electronic products	Insurance carriers and related activities
Electrical equipment, appliances, and components	Funds, trusts, and other financial vehicles
Motor vehicles, bodies, trailers, and parts	Housing
Other transportation equipment	Other real estate
Furniture and related products	Rental and leasing services, and lessors of intangible assets
Miscellaneous manufacturing	Legal services
Food and beverage and tobacco products	Computer systems design and related services
Textile mills and textile product mills	Miscellaneous professional, scientific, and technical services
Apparel and leather and allied products	Management of companies and enterprises
Paper products	Administrative and support services
Printing and related support activities	Waste management and remediation services
Petroleum and coal products	Educational services
Chemical products	Ambulatory health care services

Table B.2: BEA Sectoral Classification (cont.)

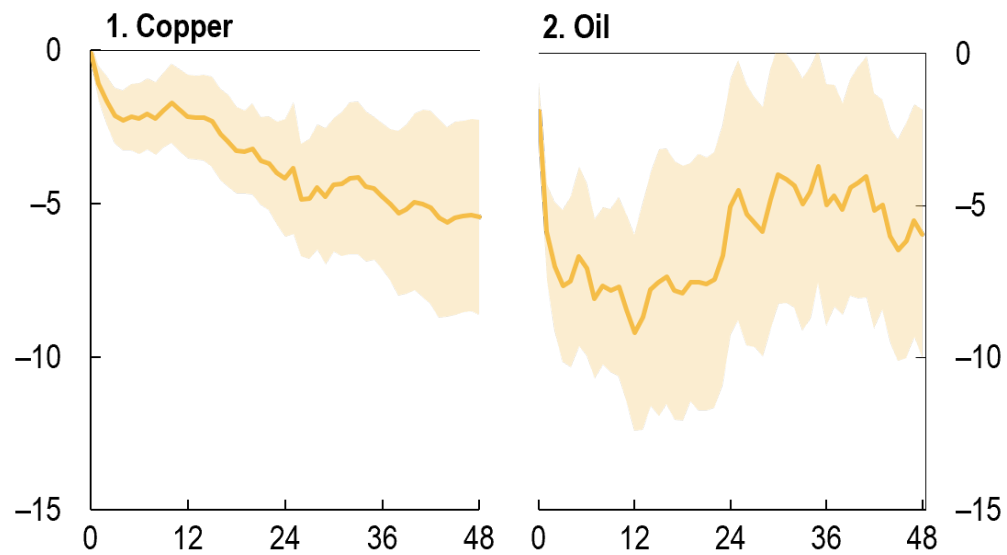
Plastics and rubber products	Hospitals
Wholesale trade	Nursing and residential care facilities
Motor vehicle and parts dealers	Social assistance
Food and beverage stores	Performing arts, spectator sports, museums, and related activities
General merchandise stores	Amusements, gambling, and recreation industries
Other retail	Accommodation
Air transportation	Food services and drinking places
Rail transportation	Other services except government

Note: The BEA sectoral classification table includes 66 sectors. Sectors related to government, such as the Federal general government sector, are not included. For the complete list, refer to the BEA website.

Table B.3: OECD Sectoral Classification

Agriculture, hunting, forestry	Electricity, gas, steam and air conditioning supply
Fishing and aquaculture	Construction
Mining and quarrying, energy producing products	Wholesale and retail trade; repair of motor vehicles
Mining and quarrying, non-energy producing products	Land transport and transport via pipelines
Mining support service activities	Water transport
Food products, beverages and tobacco	Air transport
Textiles, textile products, leather and footwear	Warehousing and support activities for transportation
Wood and products of wood and cork	Postal and courier activities
Paper products and printing	Accommodation and food service activities
Coke and refined petroleum products	Publishing, audiovisual and broadcasting activities
Chemical and chemical products	Telecommunications
Rubber and plastics products	IT and other information services
Other non-metallic mineral products	Financial and insurance activities
Basic metals	Real estate activities
Fabricated metal products	Professional, scientific and technical activities
Computer, electronic and optical equipment	Administrative and support services
Electrical equipment	Education
Machinery and equipment, nec	Human health and social work activities
Motor vehicles, trailers and semi-trailers	Arts, entertainment and recreation
Other transport equipment	Other service activities
Manufacturing nec; repair and installation of machinery and equipment	Water supply; sewerage, waste management and remediation activities
Pharmaceuticals, medicinal chemical and botanical products	Public administration and defence; compulsory social security

Figure B.1: Impulse Responses of Real Copper and Oil Prices to Positive Copper and Oil Supply Shocks, Respectively.

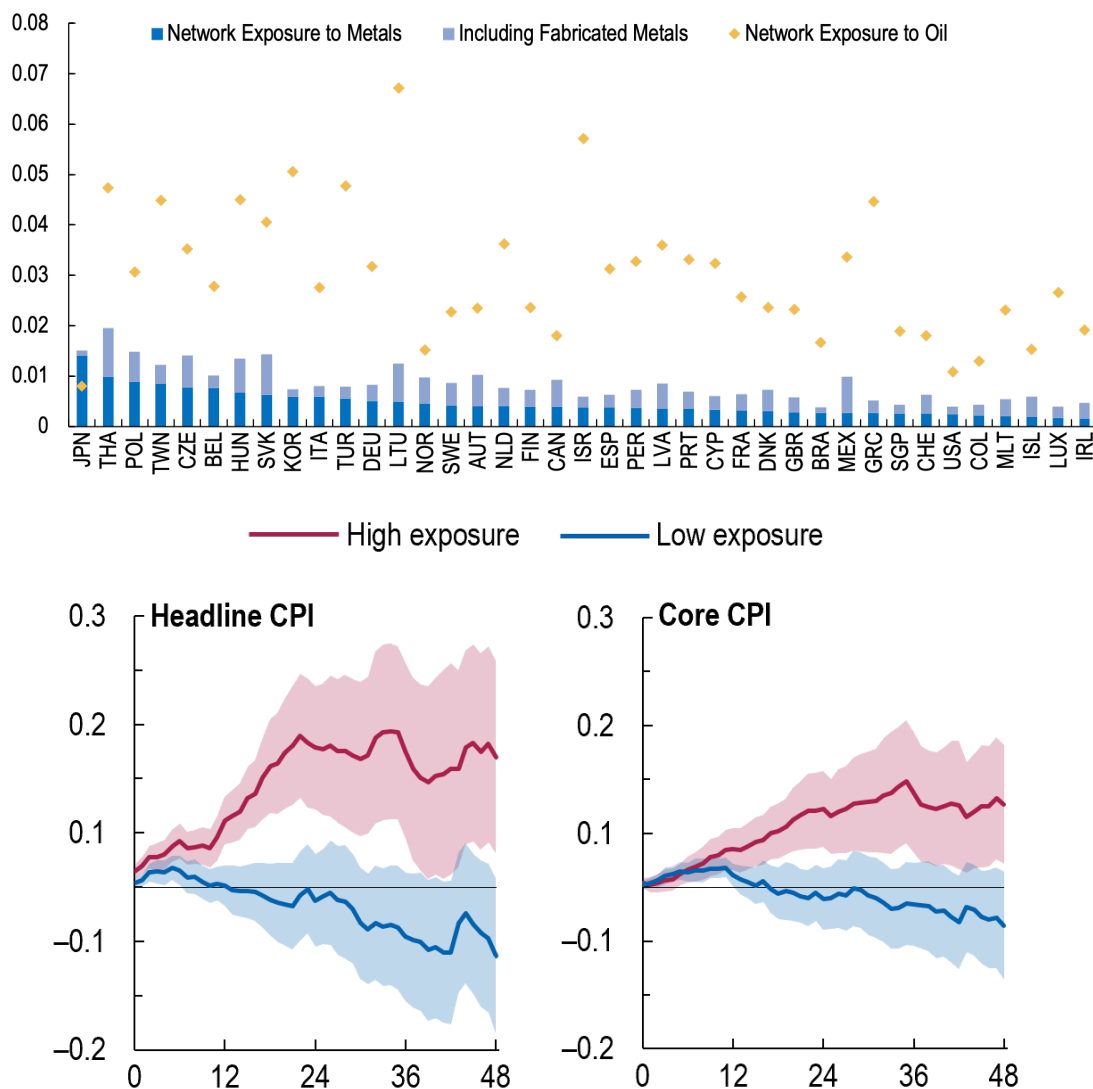


Note: Cumulative Responses are estimated using local projection, with 12 lags of shocks on the RHS. Shaded areas are 90% confidence bands based on Newey-West standard errors.

C Additional Empirical Results and Robustness

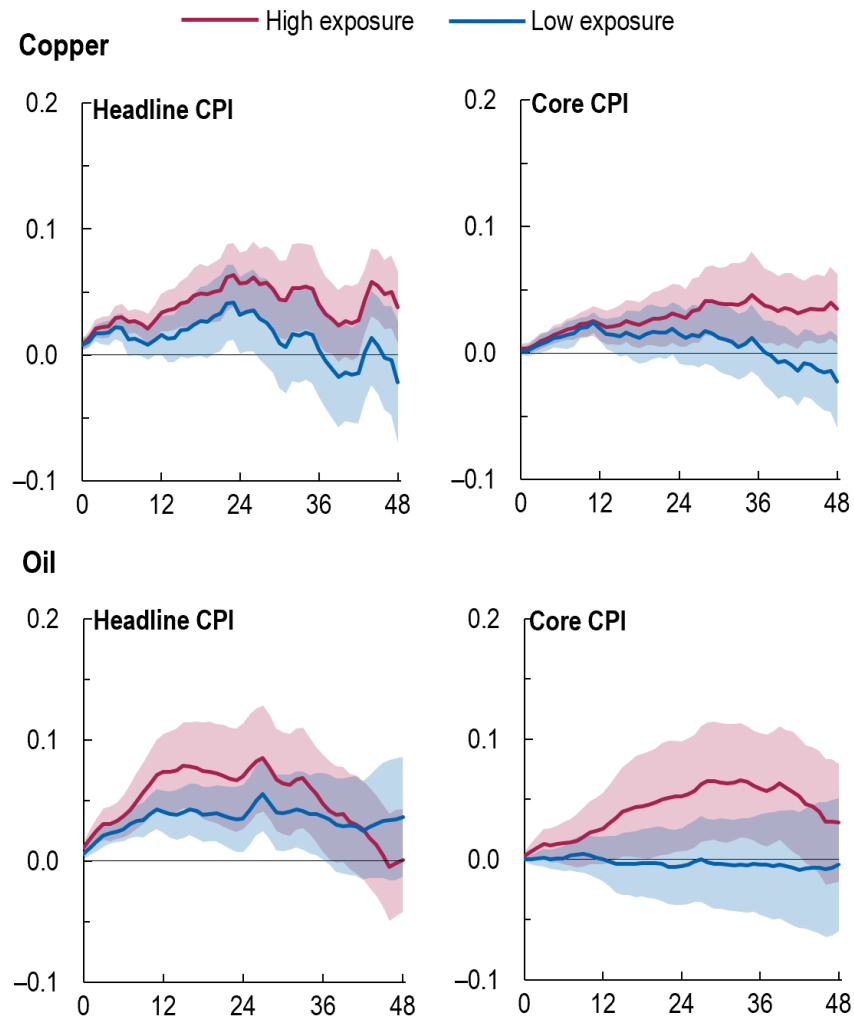
In Figure C.2, the top panel presents countries' exposure to a broader group of metals, including fabricated metals, while the bottom panel shows the corresponding heterogeneity in the impulse responses.

Figure C.2: Exposure to Metals (small open economy model) as well as Impulse Responses of Inflation to Copper Price Shocks Including also the Fabricated Metals Manufacturing Sector.



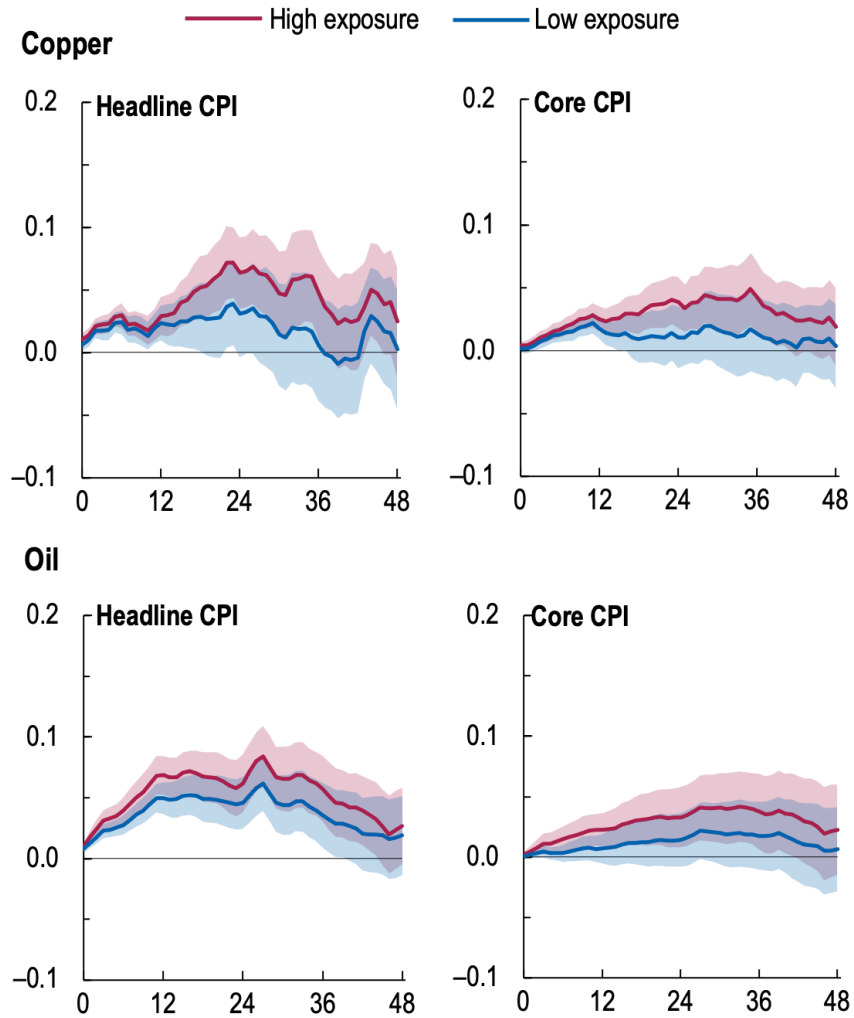
Note: Top panel: cross-country exposures to metals (Silva, 2023). Bottom panel: cumulative impulse responses of headline CPI inflation (left panel) and core (right panel) to a one percent increase in copper prices (using the copper supply shock from Baumeister, Ohnsorge, and Verduzco-Bustos (2024) as an instrument). Exposure used in this analysis is based on the sum of three OECD sectors: mining and quarrying, non-energy producing products; basic metals; and fabricated metal products.

Figure C.3: Impulse Response Functions Taking Heterogeneity Across Countries into Account and Using the Consumption Expenditure Share of Imported Metals and Oil (b_M), Excluding Indirect Network Linkages.



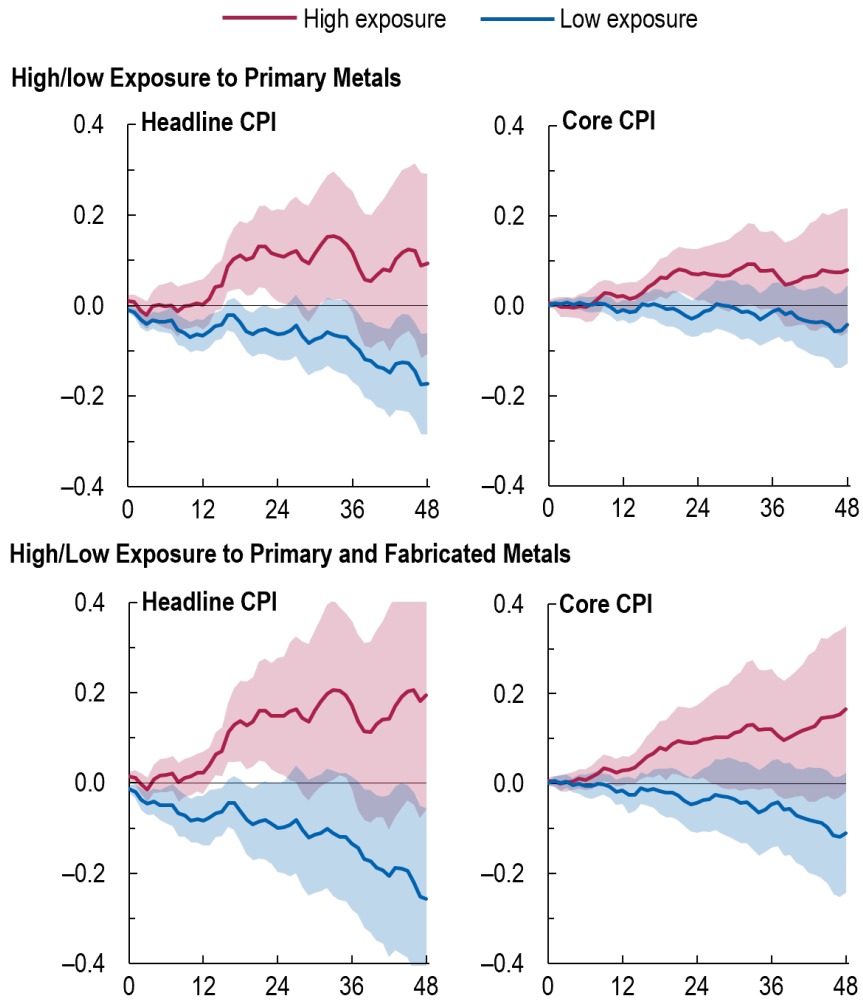
Note: Cumulative impulse responses of headline CPI inflation and core CPI inflation to a one percent increase in copper (left) and oil (right) price shocks. Exposure is calculated as consumption expenditure share of imported metals (or oil) in total household consumption expenditure. Red and blue lines denote the exposure at the 90th/10th percentile of the sample in 2018, respectively. Shaded areas are 90% confidence bands. The x-axis denotes months after the shock.

Figure C.4: Impulse Response Functions Taking Heterogeneity in the Net Import Share of Metals and Oil Into Account.



Note: Cumulative impulse responses of headline CPI inflation and core CPI inflation to a one percent increase in copper (left) and oil (right) price shocks. Exposure is calculated as country's net import share of metals or oil. Red and blue lines denote the exposure at the 90th/10th percentile of the sample in 2018, respectively. Shaded areas are 90% confidence bands. The x-axis denotes months after the shock.

Figure C.5: Impulse Responses of Inflation to Base Metals Index Shocks Instrumented by Copper Supply Shocks.



Note: Cumulative impulse responses of headline CPI inflation (left) and core (right) to a one percent increase in metal price index (using the copper supply shock from *Baumeister, Ohnsorge, and Verduzco-Bustos (2024)* as an instrument). The top panel uses exposure to primary metals, while the bottom panel uses exposure to both primary and fabricated metals.



PUBLICATIONS

Beyond Energy: Inflationary Effects of Metals Price Shocks in Production Networks
Working Paper No. WP/2024/215