

The Long Economic Hangover of PANDEMIC

History shows COVID-19's economic fallout may be with us for decades

Òscar Jordà, Sanjay R. Singh, and Alan M. Taylor

The COVID-19 pandemic's toll on economic activity in recent months is only the beginning of the story. While the rapid and unprecedented collapse of production, trade, and employment may be reversed as the pandemic eases, historical data suggest that long-term economic consequences could persist for a generation or more.

Among these are a prolonged period of depressed real interest rates—akin to secular stagnation—that may linger for two decades or more. Still, one piece of good news is that these sustained periods of low borrowing costs are associated with higher real wages and create ample room for governments to finance stimulus measures to counteract economic damage caused by the pandemic.

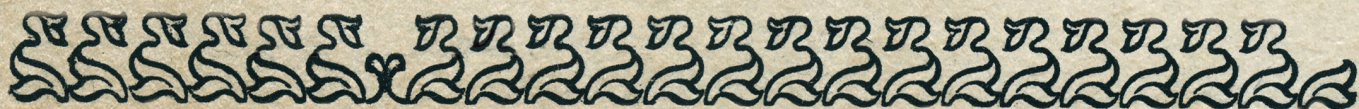
Research on the economic fallout of the ongoing COVID-19 pandemic has so far naturally focused on the short-term impacts from mitigation and containment strategies. However, as governments engage in large-scale counter-pandemic fiscal

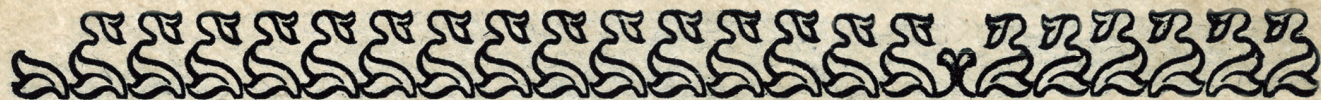
programs, it is important to understand what the economic landscape will look like in the years and decades to come. That landscape will shape monetary and fiscal policy in ways that are not yet fully understood.

A look at previous pandemics, going back to the Black Death in the 1300s, can help fill this gap by shedding light on their medium- to long-term economic effects. In extrapolating from historical trends, though, it's important to note one crucial distinction. Past pandemics such as the Black Death occurred at times when virtually no one survived to old age. With today's longer life spans, perhaps this time may be different: COVID-19 mortality appears to disproportionately affect the elderly, who typically no longer participate in the labor force and tend to save more than the young.

Pandemics and macroeconomics

Historical studies have typically focused on one event, in one country or region, and have traced





Der Doctor Schnabel von Rom.



Vos Creditis, als eine fabel.
quod scribitur vom Doctor schnabel.
der fugit die Contagion
et aufert seinen Lohn darvon.
Cadavera sucht er zu fristen
gleich wie der Corvus auf der Misten.
Ah Credite, zihet nicht dort hin
dann Romæ regnat die Pestin.

Quis non deberet sehr erschrec,
für seiner Virgul oder stecken.
quã loquitur, als wãr er stumm.
und deutet sein consilium.
wie mancher Credit ohne zweiffel,
das ihm tentir ein schwarzen Teuffel.
Marsupium heyst seine Höll.
und aurum die geholte seel

J. Columbina, ad virum delineavit

Paulus Fürst. Excudit

Also gehen die Doctores Medici dahi zu Rom, wann sie die, ander Pest ertrancete Personen besuchen, sie zu curiren und fragen, sich wider den Gift zu sichern, ein langes Kleid von gewarten Tuch ihr Angesicht ist verlarvt, für den Augen haben sie grosse Crystalline Brillen, wider Nasen einen langen Schnabel voll wolriechender Specereij, in der Hände, welche mit Hand schuhert, wol versehen ist, eine lange kütche und darmit deuten sie, was man thun, und gebrauch soll

local outcomes a decade at most. But in large-scale pandemics, effects will be felt across whole economies, or across wider regions, for two reasons: either because the infection itself is widespread or because trade and market integration eventually propagate the economic shock across the map.

In a new paper, Jordà, Singh, and Taylor (2020), we take a global view of the macroeconomic consequences of pandemics across a number of European economies. We focus on the aftermath of 15 large pandemic events with at least 100,000 deaths, which are listed in the table.

Using newly available data on yields of long-term sovereign debt stretching back to the 14th century (Schmelzing 2020), we estimate the response of a so-called real (after-inflation) natural rate of interest in Europe following a major pandemic. In what follows, we refer simply to the “natural rate.”

Economists speak of the natural, or neutral, rate of interest as the equilibrium level that would keep the economy growing at its potential rate with stable inflation. In the long run, the relative demand and supply of loanable funds by savers and borrowers determine the natural rate.

The natural rate is an important economic barometer. For example, as populations become more frugal, the relative supply of savings increases; when the underlying pace of growth wanes, investment becomes less attractive—in both cases, the natural rate declines to restore equilibrium.

As shown in Chart 1, pandemics have long-lasting effects on interest rates. Following a pandemic, the response of the natural rate of interest is tilted down by nearly 1.5 percentage points about 20 years later. For perspective, that decline is comparable to what we have experienced from the mid-1980s to today. We also find that it takes an additional 20 years for the natural rate to return to its original level.

Staggering findings

These results are staggering and speak to the large economic effects pandemics have had over the centuries. It is well known that after major recessions caused by financial crises, real safe rates—which are closely tied to the natural rate—can be depressed for 5 to 10 years (Jordà, Schularick, and Taylor 2013), but the persistence of the responses here is even more pronounced.

The evidence presented in Chart 1 is consistent with the well-known neoclassical growth model. Loss of labor without parallel destruction of capital

Historical perspective

Throughout recorded history, there have been at least 15 large pandemic events with at least 100,000 deaths.

Event	Start	End	Deaths
Black Death	1331	1353	75,000,000
Italian Plague	1623	1632	280,000
Great Plague of Seville	1647	1652	2,000,000
Great Plague of London	1665	1666	100,000
Great Plague of Marseille	1720	1722	100,000
First Cholera Pandemic	1816	1826	100,000
Second Cholera Pandemic	1829	1851	100,000
Russia Cholera Pandemic	1852	1860	1,000,000
Global Flu Pandemic	1889	1890	1,000,000
Sixth Cholera Pandemic	1899	1923	800,000
Encephalitis Lethargica Pandemic	1915	1926	1,500,000
Spanish Flu	1918	1920	100,000,000
Asian Flu	1957	1958	2,000,000
Hong Kong Flu	1968	1969	1,000,000
H1N1 Pandemic	2009	2010	203,000

Sources: Alfani and Murphy (2017); Taleb and Cirillo (2020); and https://en.wikipedia.org/wiki/List_of_epidemics and references therein.

leads to a rebalancing of the relative returns to labor and capital. The resulting drop in interest rates may also be amplified by increased saving by pandemic survivors—they may simply wish to rebuild their wealth or may just be more frugal out of caution.

If this explanation is correct, we should see a very different pattern following a quite different type of historical event that also leads to massive loss of life: war. Unlike pandemics, major armed conflicts also result in destruction of crops, land, structures, and machinery: in other words, the loss of capital.

To explore further, we extended our initial estimates to include major wars that resulted in large loss of life (and large loss of land, structures, and other traditional forms of capital). The results could not be clearer. In wars, the relative loss of capital to labor tilts the interest rate response up, not down, as Chart 1 also shows. Wars tend to leave real interest rates elevated for 30 to 40 years, and in an economically (and statistically) significant way.

If the neoclassical mechanism is correct, there is another dimension where the effects of pandemics should be visible. As the labor-to-capital ratio declines, the natural rate should decline but real wages should increase. Chart 2 shows the response

of the real wage to pandemics; it rises gradually so that, 40 years out, the real wage is about 10 percent higher. This pattern is thus consistent with the logic of the neoclassical growth model.

Net result

The great historical pandemics of the past millennium have typically been associated with subsequent low returns on assets. Measured by deviations in the natural rate of interest, these responses indicate that pandemics are followed by sustained periods—over multiple decades—with depressed real interest rates. This may reflect a lack of needed investment (because of excess capital per unit of surviving labor), an increased desire to save (out of caution, greater uncertainty, or a desire to rebuild depleted wealth), or both.

If the historical trends we have highlighted play out similarly in the wake of COVID-19, then secular stagnation (Summers 2014) would be a concern for monetary and fiscal stabilization policy for the next two decades or more.

But should we expect declines of 1.5 percent to 2 percent in the natural rate this time? There are at least three factors that will likely attenuate the decline of the natural rate.

First, the death toll of COVID-19 relative to the total population could be smaller than that of some of the major pandemics of the past, if modern medical care and public health measures are more effective.

Second, COVID-19 affects primarily the elderly, who are no longer in the labor force and tend to save relatively more than the young—a big difference from past centuries, when people had shorter life expectancies.

Third, aggressive counter-pandemic fiscal expansion will further boost public debt, reducing the national saving rate and possibly putting upward pressure on real interest rates.

On net, we still expect a sustained period of low real interest rates (though attenuated by the factors we discussed). Low real rates should then provide welcome fiscal space for governments to aggressively mitigate the consequences of the pandemic. **FD**

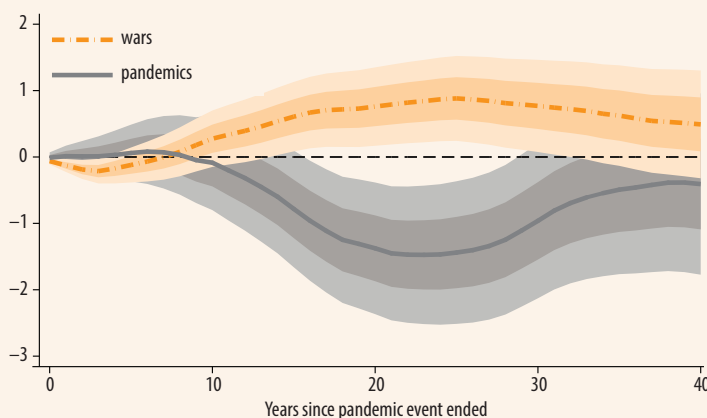
ÒSCAR JORDÀ is senior policy advisor at the Federal Reserve Bank of San Francisco and professor of economics at the University of California, Davis. **SANJAY R. SINGH** is an assistant professor of economics at the University of California, Davis. **ALAN M. TAYLOR** is a professor of economics and finance at the University of California, Davis.

Chart 1

Wars versus pandemics

The real interest rate tends to stay elevated for decades following wars, which is the opposite of what happens following a pandemic.

(response of real interest rates to a pandemic, percent)



Source: Jordà, Singh, and Taylor (2020).

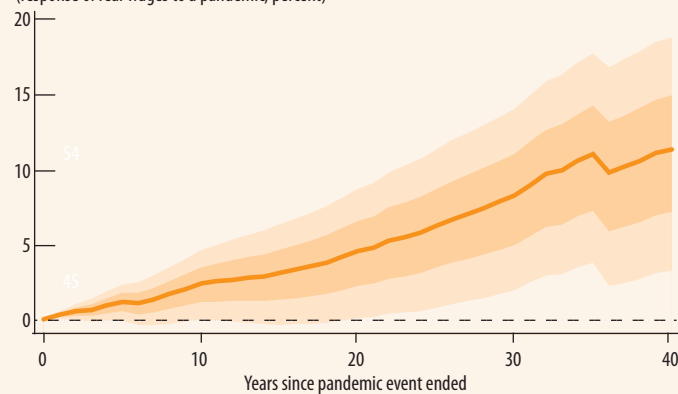
Note: Shaded regions represent standard deviation bands.

Chart 2

Steady rise

Real wages tend to rise gradually in the decade following a pandemic.

(response of real wages to a pandemic, percent)



Source: Jordà, Singh, and Taylor (2020).

Note: Shaded regions represent standard deviation bands.

References:

Jordà, Ò., M. Schularick, and A. M. Taylor. 2013. "When Credit Bites Back." *Journal of Money, Credit and Banking* 45 (s2): 3–28.

Jordà, Ò., S. R. Singh, and A. M. Taylor. 2020. "Longer-Run Economic Consequences of Pandemics." *Covid Economics: Vetted and Real-Time Papers* 1 (April 3): 1–15.

Schmelzing, P. 2020. "Eight Centuries of Global Real Interest Rates, R-G, and the 'Suprasecular' Decline, 1311–2018. Bank of England Staff Working Paper 845, London.

Summers, L. H. 2014. "U.S. Economic Prospects: Secular Stagnation, Hysteresis, and the Zero Lower Bound." *Business Economics* 49 (2): 65–73.